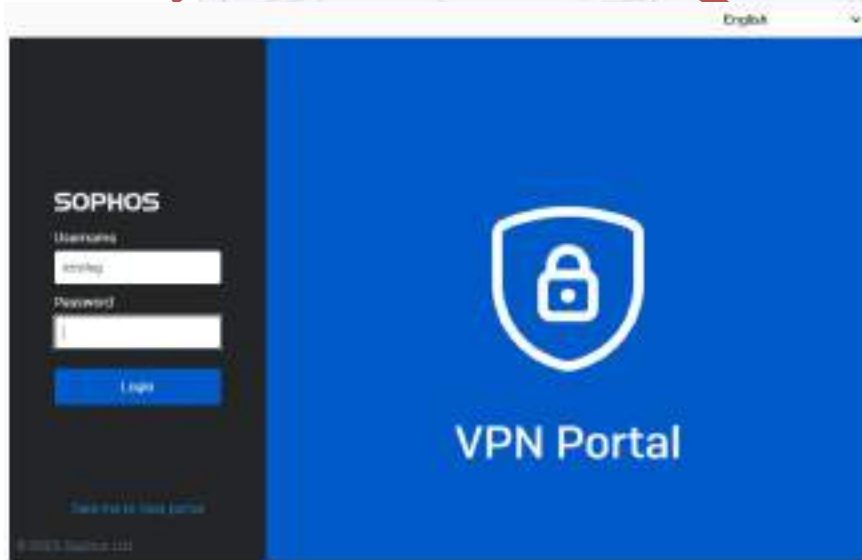


Penerapan Autentikasi multi-faktor (MFA) VPN SILOG

DEPARTMENT OF INFORMATION & COMMUNICATION TECHNOLOGIES



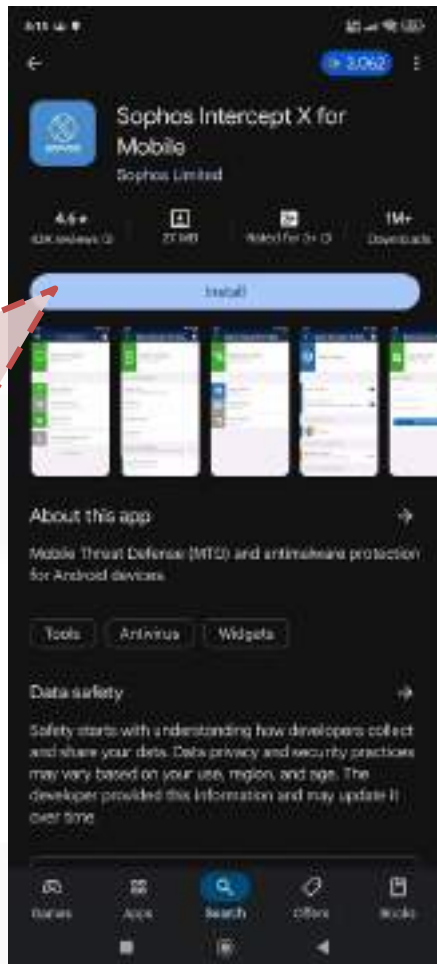
- Sebelum mengaktifkan MFA, user sudah memiliki account VPN dan password.
- Permintaan account VPN melalui aplikasi <https://tiket.silog.co.id>
- Aktivasi perangkat MFA melalui link <https://vpn.silog.co.id:1974>
- Masukkan user dan password, kemudian **login**.

Berikut tampilan setelah **login**, persiapan smartphone sebagai perangkat untuk mengirimkan token.



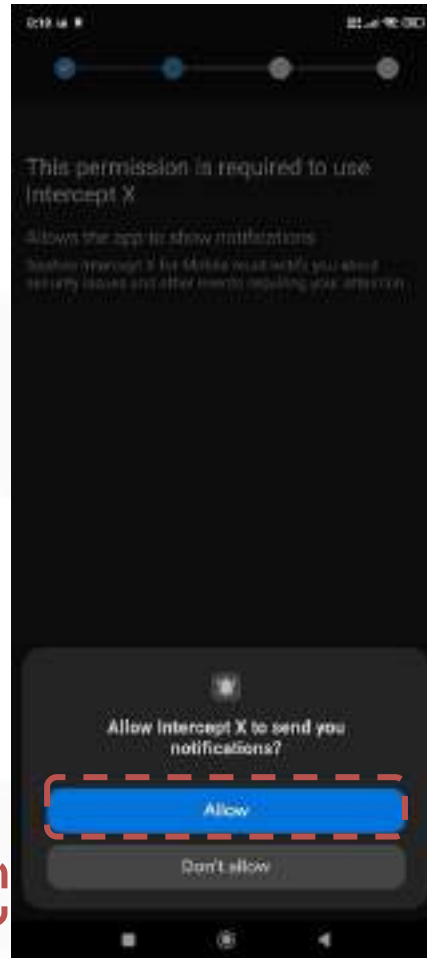
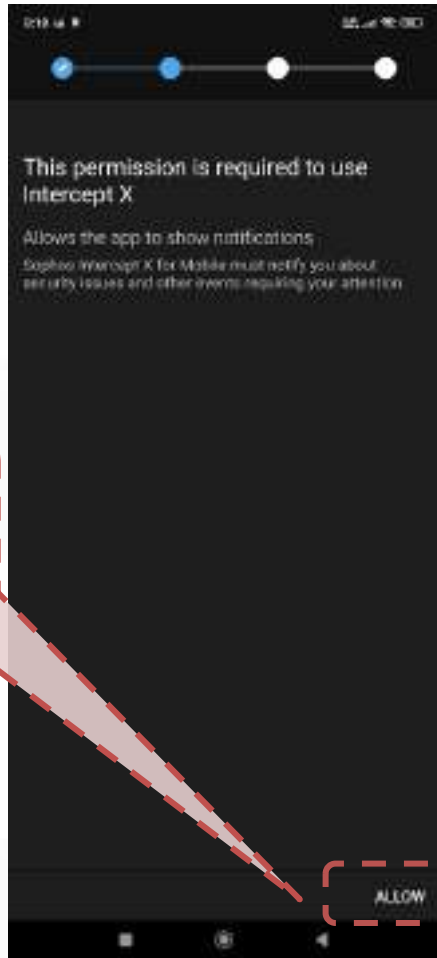
The screenshot shows a web browser window displaying the Sophos portal. The address bar shows the URL: `http://ipn.silog.co.id:1974/portal/webpages/index.html#61097`. The page title is "SOPHOS" and the sub-header is "OTP tokens for ictsilog". The main content area is titled "Description" and contains the following text: "To be able to sign in to the portal, you must use one-time passwords. Scan the QR code using an authenticator app on your mobile phone. The app generates a new passcode after every time step. Enter your password followed by the passcode. Format: <password>". Below the description is a section titled "Auto-generated OTP tokens" which displays a QR code and the following details: Account: ictsilog@CT-60PH08, Secret (HEX): c3ee1317a117d1e33cd3facbc4175ee, Secret (BASE32): 2hXPOZSP2FBQ0NWZ/LH2YQLV5, and Timestep: 30s.

Install Sophos Intercept X for Mobile melalui Google play atau App Store.

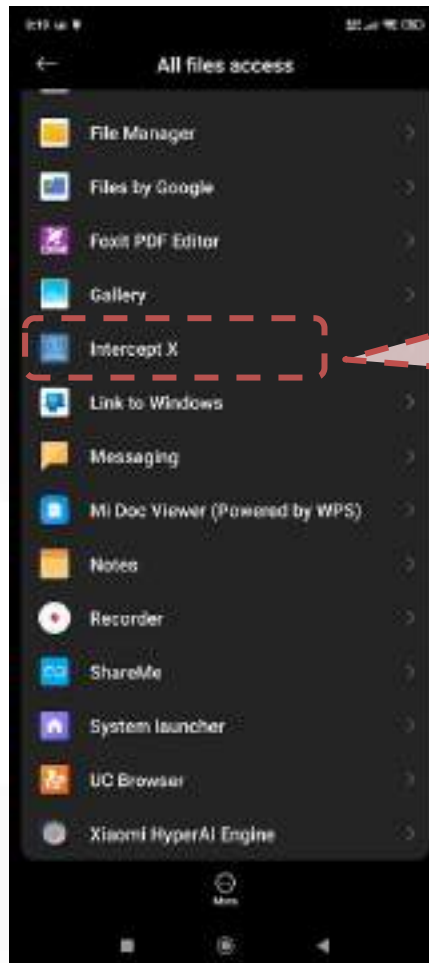
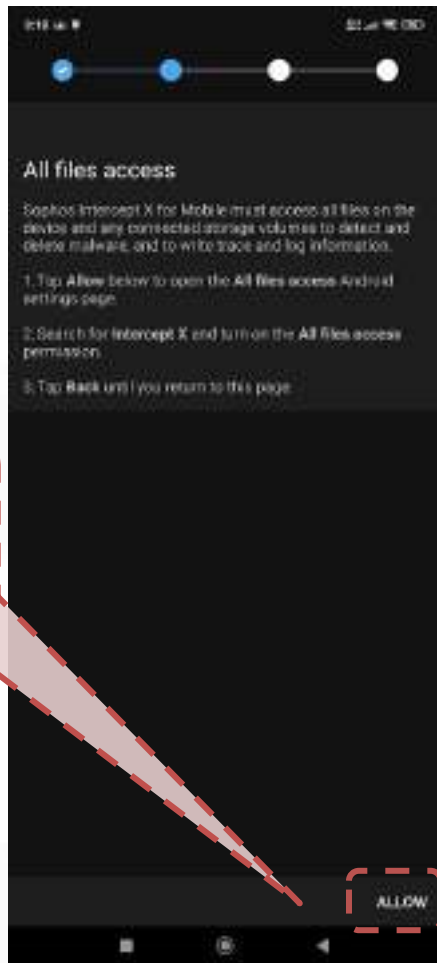


Buka aplikasi Intercept X, dan berikan konfirmasi dengan tekan tombol **ACCEPT AND CONTINUE**

Berikan akses
dengan tekan
tombol
ALLOW

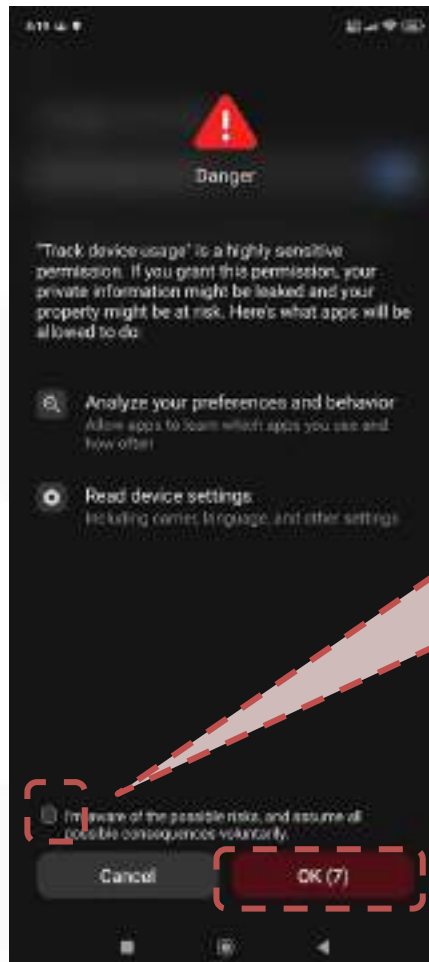
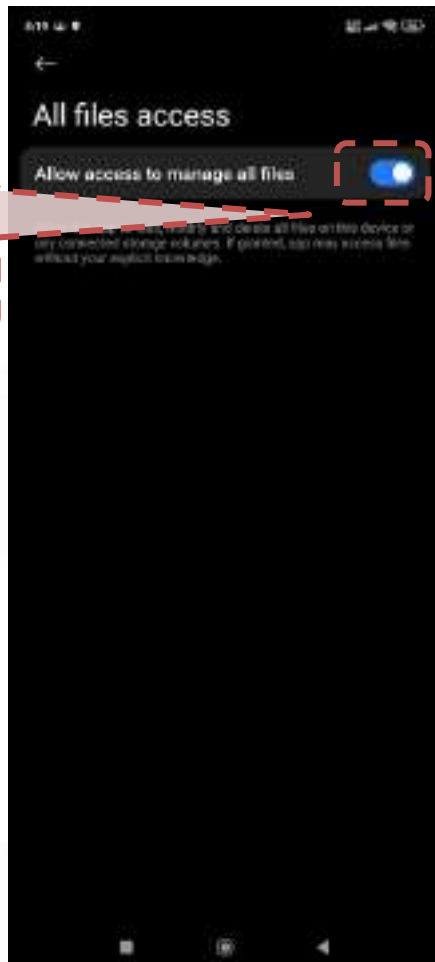


Berikan akses
dengan tekan
tombol
ALLOW



pilih aplikasi
Intercept X,

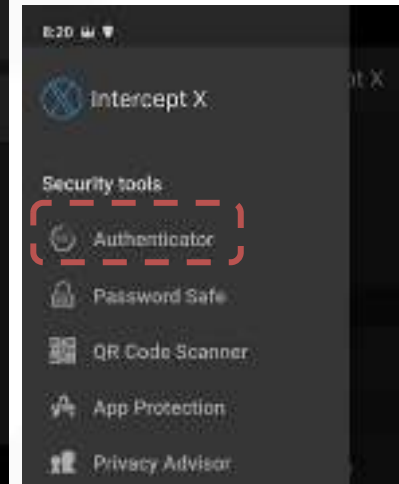
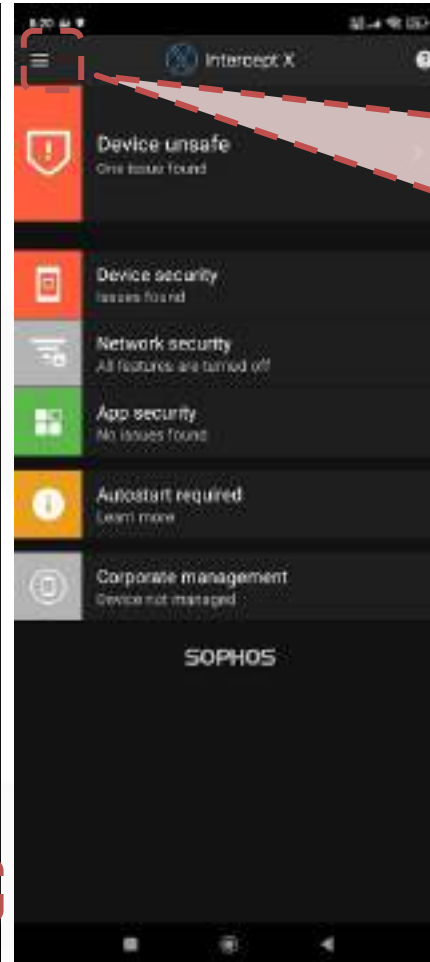
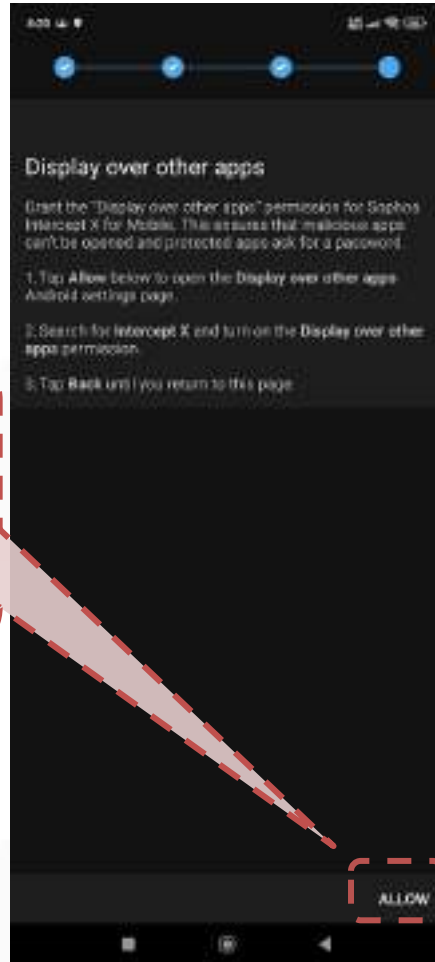
Berikan akses,



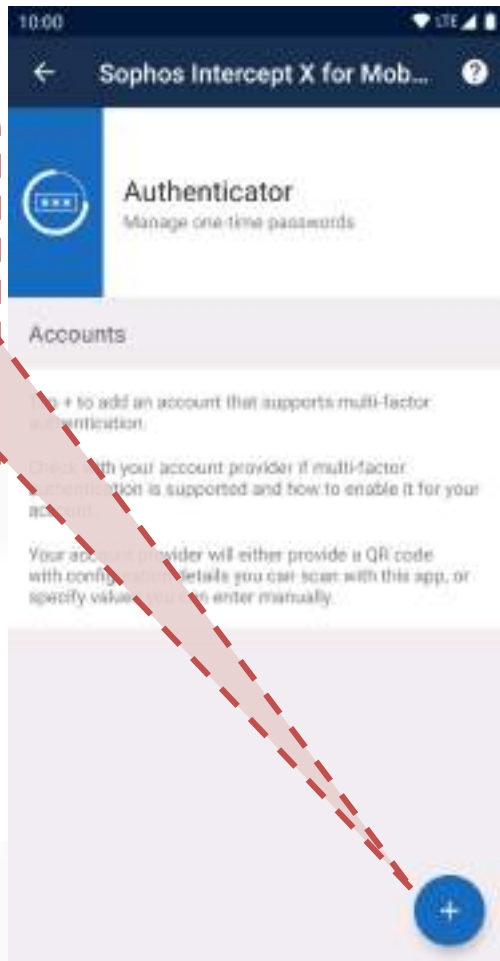
Berikan akses dan tunggu tombol OK sampai bisa di tekan.

Berikut halaman awal, kemudian lakukan generat OTP, pilih strip 3 berlanjut ke menu authentication

Ulangi pemberian akses smpai 3 kali.



Untuk generate token, tekan tombol + dan pilih scane QR pada tampilan halaman sebelumnya.



Token akan muncul setelah scane QR berhasil.

Lakukan pemindaian QR dan setelah muncul token pada aplikasi Authenticator, klik **Proceed to login.**



The screenshot shows a web browser window with the URL `https://vpn.silog.co.id:1974/vpnportal/webpages/index.html#61097`. The page is titled "GTP tokens for lctsllog" and features the Sophos logo in the top left. A dark blue sidebar on the left contains a button labeled "Proceed to login", which is circled with a red dashed line. The main content area includes a "Description" section with instructions: "To be able to sign in to the portal, you must use one-time passwords. Scan the QR code using an authenticator app on your mobile phone. The app generates a new passcode after every timestamp. Enter your password followed by the passcode. Format: <password>.<passcode>". Below this is a section for "Auto-generated GTP tokens" containing a QR code and the following details:

- Account: lctsllog@CT-SOPHOS
- Secret (HEX): c5ee1317a117d0e03cd9bacfc4175ee
- Secret (BASE32): ZH6POZSP2FB00NWZ7LH3YOLV5I
- Timestamp: 30s

Berikut halaman portal ketika berhasil login menggunakan kombinasi **password+token,**

1. Download Sophos connect kalau belum terpasang di komputer.
2. Download file konfigurasi.

SOPHOS

VPN

OTP tokens

Logout

VPN portal for i

Sophos Connect client ⓘ

1

Download for Windows

Download for macOS

VPN configuration

SSL VPN configuration ⓘ

2

Download for Windows, macOS, Linux

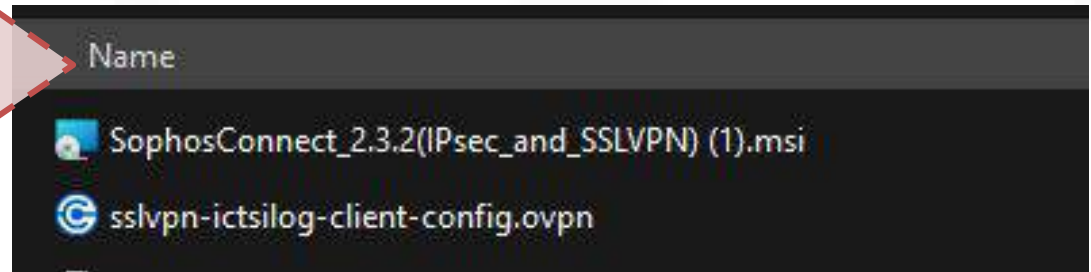
Use with Sophos Connect and OpenVPN Connect v2 clients

Download for Windows, macOS, Linux

Use with OpenVPN Connect v3 clients

Download for Android and iOS

Buka file hasil download,
1. SophosConnect...
lakukan instalasi aplikasi
bila belum ada di komputer.
2. Sslvpn-ictsilog..... Kalau
sudah ada aplikasi
Sophos... (VPN)



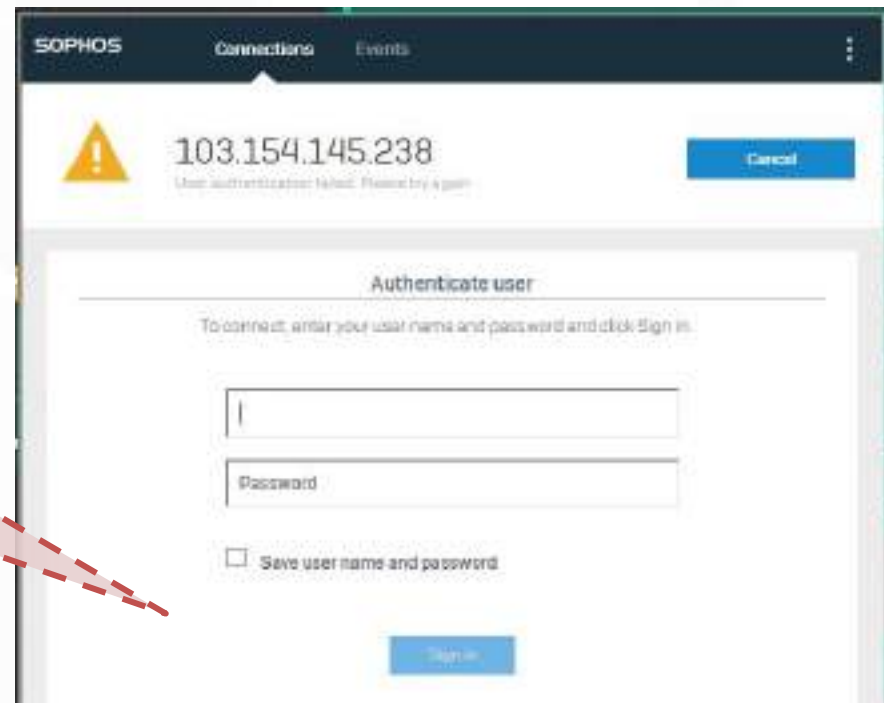
Buka aplikasi VPN dan masukkan user dan password. Untuk password menggunakan kombinasi

password+token

Sesuaikan token dengan aplikasi Google Authenticator

Contoh : password321654

Catatan: box "**Safe user name and**" jangan dicentang.



SOPHOS Connections Events

103.154.145.238
User authenticator failed. Please try again

Cancel

Authenticate user

To connect, enter your user name and password and click Sign in.

Password

Save user name and password

Sign in



SILOG

PT Semen Indonesia Logistik

Jl. Veteran No.129, Kb. Dalem, Singosari, Kec. Kebomas, Kabupaten Gresik, Jawa Timur 61122, Indonesia

P. (62-31) 3981463 (Hunting) F. (62-31) 3982304

www.silog.co.id